

LAND

The Portal, Bridgewater Close, Network 65
Business Park, Burnley, BB11 5TT
burnley@tdawson.co.uk

FOR SALE

RESIDENTIAL DEVELOPMENT SITE

- ATTRACTIVE RURAL LOCATION
- POPULAR ROSSENDALE AREA
- PLANNING FOR 8 HOUSES

APPROX 0.14 HECTARES (0.34 ACRES)



COMMERCIAL STREET
LOVECLOUGH
ROSSENDALE
BB4 8QX

LOCATION

Fronting Commercial Street off Burnley Road (A682) in the Loveclough area of Rossendale.

Burnley Road links the towns of Rawtenstall and Burnley through the popular village of Crawshawbooth.

The site is approximately 3 miles to the north of Rawtenstall town centre.

DESCRIPTION

Plot of land fronting Commercial Street.

The land fronting Commercial Street benefits from planning consent for eight properties.

SITE AREA

APPROX SITE AREA

0.14 Hectares (0.34 acres)

SERVICES RESPONSIBILITY

It is the prospective purchaser's responsibility to verify that all appliances, services and systems are in working order, are of adequate capacity and suitable for their purpose.

PLANNING

Planning consent was granted on the 11th March 2013 for the erection of ten houses including new access and car parking. Application No. 2011/0457.

Supporting documentation for the planning applications are available for download via The Rossendale Borough Councils website or upon request from the agent.

TENURE

Freehold we are informed.

PRICE

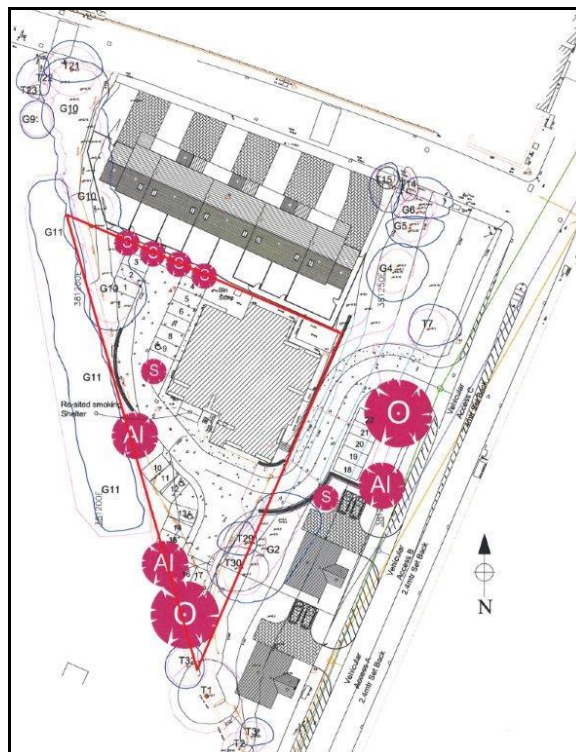
Upon request.

LEGAL COSTS

Each party to be responsible for their own costs incurred.

VIEWING

The site can be inspected at any time but under no circumstances should investigations be carried out without prior consent from the land owners. Further information from THE SOLE AGENTS TREVOR DAWSON & COMPANY, THE PORTAL, BRIDGEWATER CLOSE, NETWORK 65 BUSINESS PARK, BURNLEY, BB11 5TT.



area edged red excluded from the sale